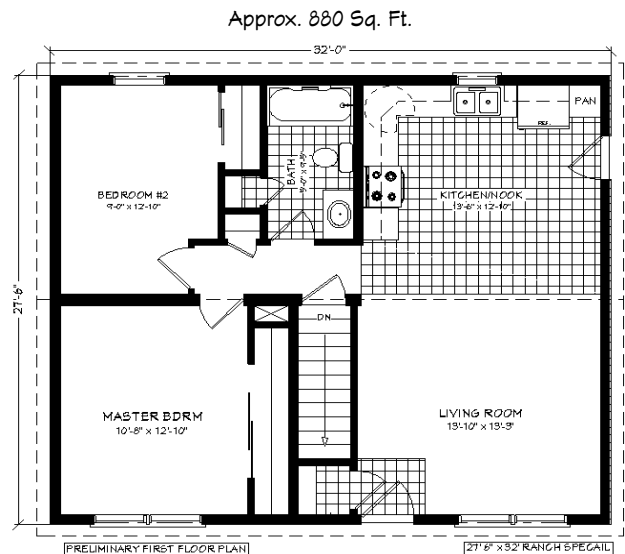


COTTAGE SPECIAL



EXTERIOR SHOWN WITH CERTAIN FEATURES THAT MAY BE OPTIONAL

- 100% 16" O.C. Construction
- 2"x6" Exterior Walls
- 30 Year Architectural Shingles
- Merillat Oak Cabinets
- Double Hung Vinyl Windows
- Moen Single Lever Faucets
- Double Layer Floor Decking
- R-38 Fiberglass Ceiling Insulation
- 5/12 Attic Storage w/Pull-Downs
- Cultured Marble Vanity Top
- 10 Year Structural Warranty



TRI-COUNTY HOMES, INC.

22984 Route 66

Shippenville, PA 16254

SALES@TriCountyHomes.com

www.TriCountyHomes.com

(800)540-1295

\$59,950.00

