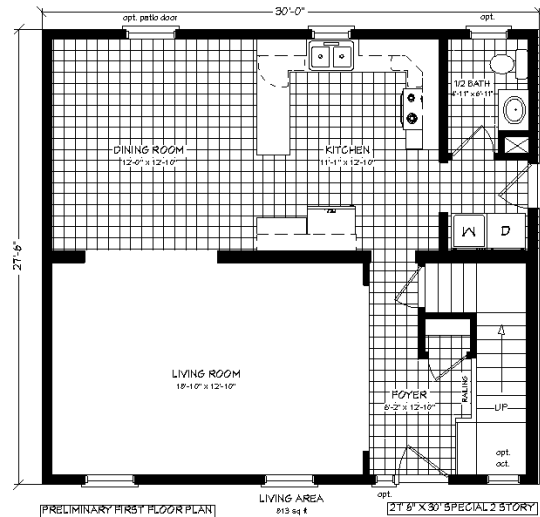


# 2-STORY SPECIAL

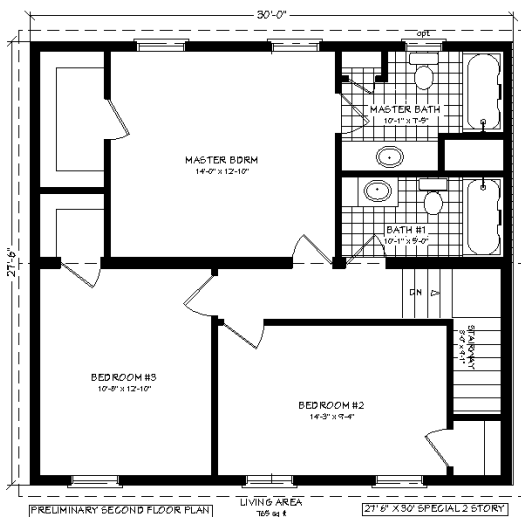


EXTERIOR SHOWN WITH CERTAIN FEATURES THAT MAY BE OPTIONAL

- 100% 16" O.C. Construction
- 2"x6" Exterior Walls
- 30 Year Architectural Shingles
- Merillat Oak Cabinets
- Double Hung Vinyl Windows
- Moen Single Lever Faucets
- Double Layer Floor Decking
- R-38 Fiberglass Ceiling Insulation
- Cultured Marble Vanity Top



Approx. 1650 Sq. Ft.



**TRI-COUNTY HOMES, INC.**

22984 Route 66

Shippenville, PA 16254

SALES@TriCountyHomes.com

www.TriCountyHomes.com

(800)540-1295



**\$99,950.00**

